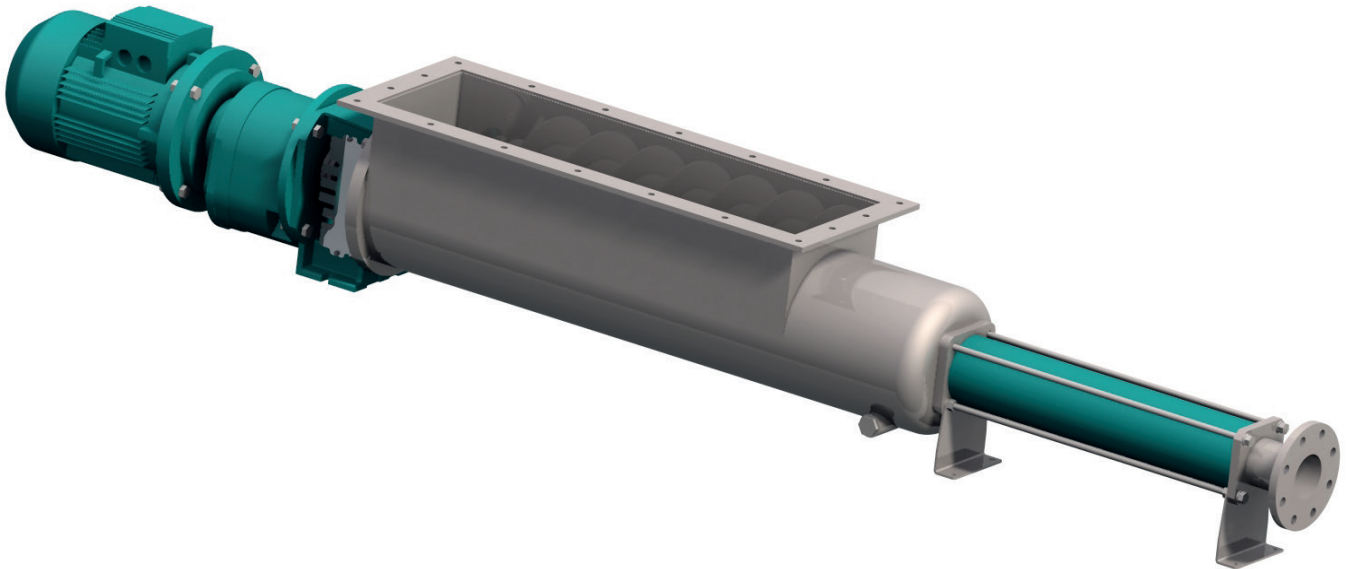
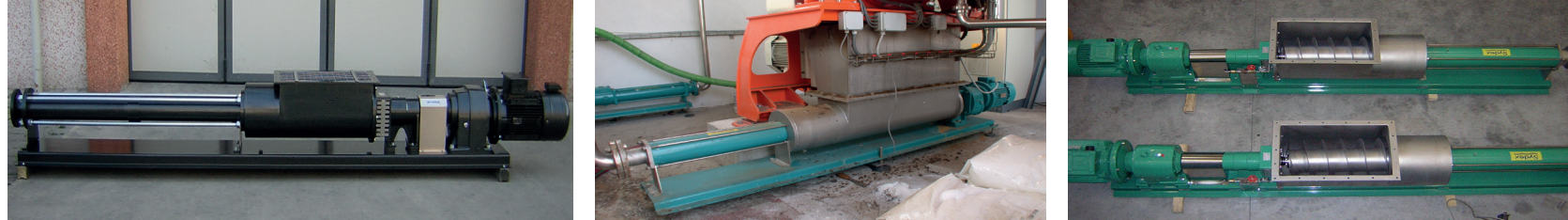


Range G - Industrial pump



PROGRESSING CAVITY PUMP
Italian Designed & Manufactured

Legendary Reliability



SYDEX PROGRESSING CAVITY PUMPS:

Founded in 1999, Sydex has developed and extensive range of high quality and cost effective progressing cavity pumps. By being able to provide state-of-the-art-market-driven products, flexibility in providing customer-focused solutions, and unparalleled levels of service, we are experiencing rapid throughout the globe.

G Range:

Peculiar construction for an easier handling of very viscous matters.
A wide diameter of the screw feeder and the enlarged dimensions of the hopper give you an extremely high level of performance.
Effectiveness can be considered really higher than a traditional open throat style pump.
The range can be produced both in block coupling version (max 6 m pedestal).

Features:

Stable pump - low pulsation
Delivery direction reversible
Self-priming rate high
ATEX version available
Compact design and cost-efficient
Easy maintenance and service
Various rotor/stator geometries available
Products with solids can be conveyed gently without damage.

Capacity: from 30 l/h up to 300 m³/h [0.132 usgpm up to 1.320 usgpm]
Pressure: up to 48 bar [696 psig]

Block version
Model: BG 052-2S



Housing bearing version
Model: LG 052-2S



G Hopper

The new hopper has a innovative design that allows a wider throat.

Rotor

Large choice of materials available: hardened tool steel, chrome plated treatment, stainless steel, SAF.

Discharge flange

Standard connection sized to ensure no "dead zones" and features to allow complete draining, essential when pumping sludges and slurries.

Drive

First class geared motor, variable speed drives or frequency controlled drives, directly flanged to the pump with no additional coupling.

Joint

Large choice of materials and types available (universal joint, pin joint). The joint is sealed with elastomeric boot and lubricated with synthetic oil.

Auger

A Wider screw for enhanced performance and effectiveness.

Typical fields of application



Enviromental and energy

Waste water treatment, drinking water purification, renewable energies, biogas plant.



Food and pharma-ceutical

Beverages, wine, sugar, dairies, braweries, fish and meat processing, bakery products.



Oil and gas

On and offshore oil production, oil transfer, petrochemicals, refineries.



Shipbuilding

Conveying bilge water, drilling mud, treatment of waste, oil water separation.



Chemical, pulp and paper

Chemical industry, paper, cellulose and textil industry, paint and varnish.



Mining

and anywhere the conveyed product is too viscous and with poor flowing properties to be pumped with other pumps.

Stator

Available in a wide range of materials (Nbr, Hypalon, Viton, etc).

Gaskets are an integral part of the stator. Corrosion of the stator tube is never a problem because the pumped liquid never comes into contact with the metal.

